

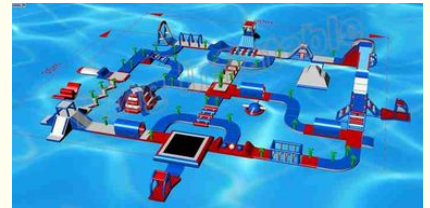


## Giant Exciting Inflatable Aqua Park / Inflatable Playground With Slide 50 \* 35m

Our Product Introduction

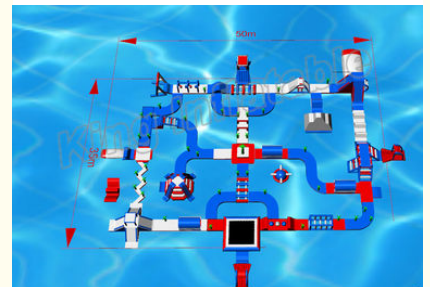
### Basic Information

- Place of Origin: GuangZhou, China
- Brand Name: King Inflatable
- Certification: CE, UL, SGS, EN71, EN14960
- Model Number: King-wp074
- Minimum Order Quantity: 1 pc
- Price: USD 10000-40000 pc
- Packaging Details: Plastic PVC bag : 50 PVC bags - about 100\*70\*70cm
- Delivery Time: 20-25 working days
- Payment Terms: T/T, L/C, Western Union, Money Gram, Euro account, US dollar account
- Supply Ability: 500 pcs /Month

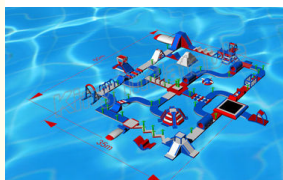


### Product Specification

- Type: Inflatable Water Park
- Material: 0.9mm PVC Tarpaulin
- Size: 50\*35m
- Color: Red And Blue
- Accessories: Air Pump
- Usage: Outdoor Water Games On Land
- Package: PVC Bag For Water Park And Carton For Air Pump
- Feature: Consist Of 50 Items
- Highlight: inflatable water park for kids, amazing inflatable water park



### More Images



for more products please visit us on [inflatablewaterfun.com](http://inflatablewaterfun.com)

## Product Description

### Giant Exciting Inflatable Aqua Park / Inflatable Playground With Slide 50 \* 35m

The water park is widely used in the sea for people to enjoy the life. You need to fixed the water park in the sea by anchoring system, otherwise, it will be flow away. Also, if you open the water park on the sea, you also need to get ready for the life jackets. Both adults and kids need the life jackets to protect them safety.

#### Specifications :

Product Type	Inflatable Water Park
Material	0.9mm PVC Tarpaulin
Size	50*35m or customized
Color	red and blue or customized
Features	Consist of 50items
Warranty	2 years
Accessories	Including air pumps and repair kits
Certificates	CE EN71 EN14960 SGS ROHS

Single product name	Quantities	Size
Hurdle	2	5.5x2 m
Monkey Bars	1	6x4 m
Junction	2	3.5x3.5 m
Beam	1	4.5x2 m
Base	6	3x2 m
Tunnel	1	5x2 m
Trampoline	1	6*6*0.9 m
Spinner	1	3.6x3.6 m
High Roller	1	6*2 m
Tower	2	5x2.5 m
Connect	10	3.7x3.7 m
Dome	2	6*3 m
overshadow	1	3x3 m
Swing	1	6x2 m
Cliff	1	3.5x2 m
Turnel	3	6x2 m
Slider	3	3x2 m
Slide Walk	1	9*2 m
Side Walk	1	8*2 m

#### Details :

1. We, King Inflatable Company, pay more attention on the products quality, use 0.9mm PVC Tarpauline from Plato factory material to make this water park.
2. This Inflatable Water Park : It contains 50 pieces in total , including big slider, trampoline, cliff, Junction,ect. Which is very exciting, people all like them.
3. System : This Water Park is with air pump, which need to be inflated by air pump only one time, and it usually can keep about 10 days.
4. Guarantee: Our guarantee is 2 years. we will also offer the repair kit and glue for you for backup. For normal use, if there are any quality problem occurs during the period of warranty time, we factory will take full esponsibilities to get it reworkm if faildm we will make a new one for free.

#### Our services:

1. As a reputable company in inflatable field, we have been providing our customers the fastest and the most satisfactory answers response service, and providing the best solutions to our customers' questions regarding of inflatables or anything

related.

2. As a professional supplier of inflatable products, and holding lots of professional and experienced designers in our team, we have been providing our customers the best ODM & OEM service from start to finish.

3. As an experienced exporter for years, we have been providing our customers the fastest and the most economical shipping service to ship goods, to save time and save money for all of our customers.

4. As a responsible company in the world, we have been providing our customers the best payment term, and have been striving to help our customers to optimize buying plans, and have been endeavoring to solve financing for our customers.

5. Our after-sales service staff to follow up the long-term use of the product, if there are quality problems will promptly give customers a technical guidance and processing advice, if can not immediately deal with, she will respond within 24 hours to contact with customers and deal with according to the actual situation

#### **Advantages :**

1. Double-triple stitches are fully used throughout the products.

2. Quadruple stitches are used for key areas of the inside base.

3. Extra webbing strips add on all stress points and the interior for reinforcements.

4. Emergency exit of each products for safety in advance.

5. Safety rules booklet

6. Repair kit provided for each products

7. Blueprint will be provided before production to let you confirm.

8. Take nice and clear photos when production finished and show you, then well packed and deliver.

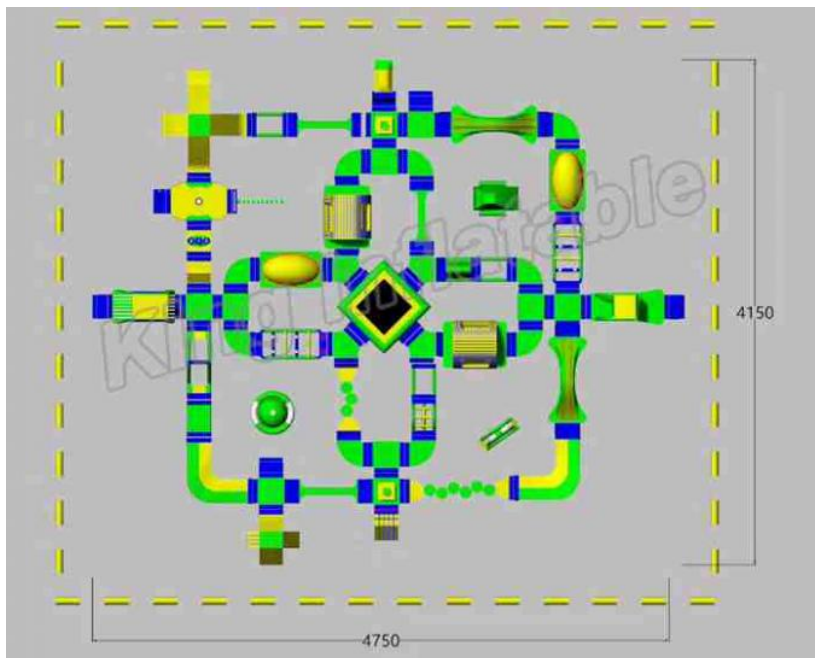
9. We will show you every step of installation when you're not familiar with our products.

10. If you meet with any question please contact us, we will service until you satisfied.

#### **Pictures :**

---





**King Inflatable Co., Limited**



+86 18620259154



kinkor@king-inflatable.com



inflatablewaterfun.com

Room 813, Building A, Jingshi Plaza, No.179 Yingbin Avenue, Huadu District, Guangzhou, China